

CORKSCREW SWAMP SANCTUARY WOOD STORK NESTING UPDATE

February 2018

Our third flight of the 2018 nesting season was conducted Thursday February 1st (observers: Mica Rumbach (Field Technician) & Kelsie Buxbaum (Conservation Intern)). The vast majority of this year's nesting effort (so far) is in one large, dispersed sub-colony in a north-northeast area of the cypress that surround Corkscrew's horseshoe marsh. We estimated approximately 800-1000 adult storks in this sub-colony but nest counts have not yet been made. In addition to this large sub-colony, one or two other very small sub-colonies were seen (only a few nests each) on the western/northwestern edge of the horseshoe marsh.

Wood Stork chicks were clearly visible in many areas (usually 2-3 chicks per nest) and preliminary estimates are that chicks were up to 4 weeks old. Notably, many nests appear to still be incubating eggs and many empty nests were observed. This spread in chick age/stage is not unusual.

No other wading birds were observed nesting within this colony, although a number of Roseate Spoonbills were observed roosting and flying within the colony.

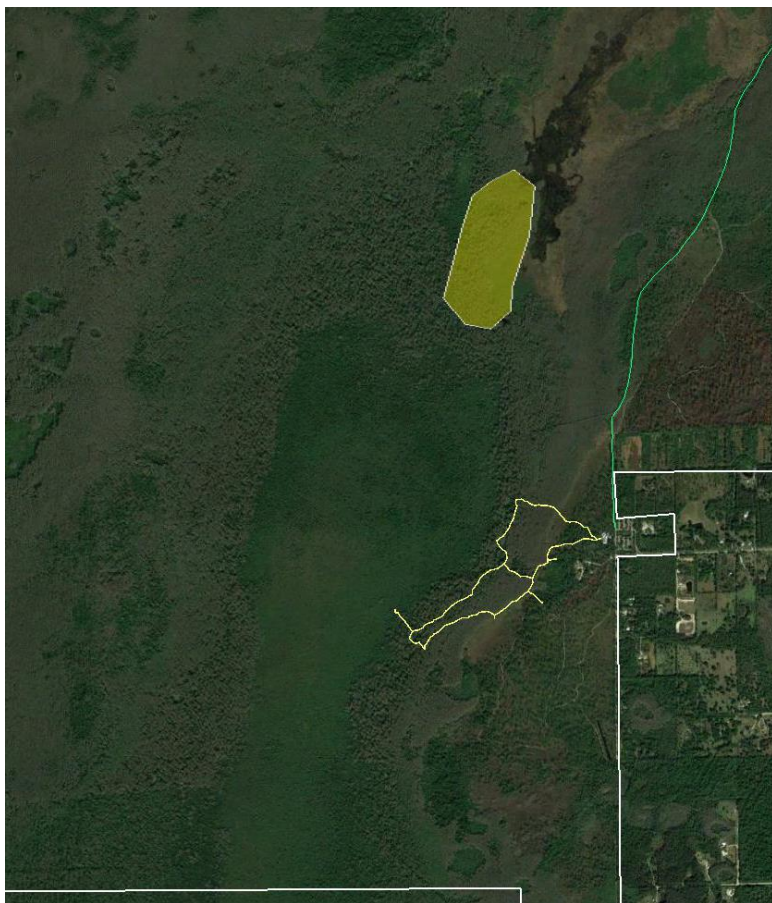
In addition to the Corkscrew colony, Wood Stork nesting was observed on Lenore Island (Caloosahatchee River) and at BC-29 (west of SR-29, north of the Panther Refuge).

Our next flight will be conducted in early March.

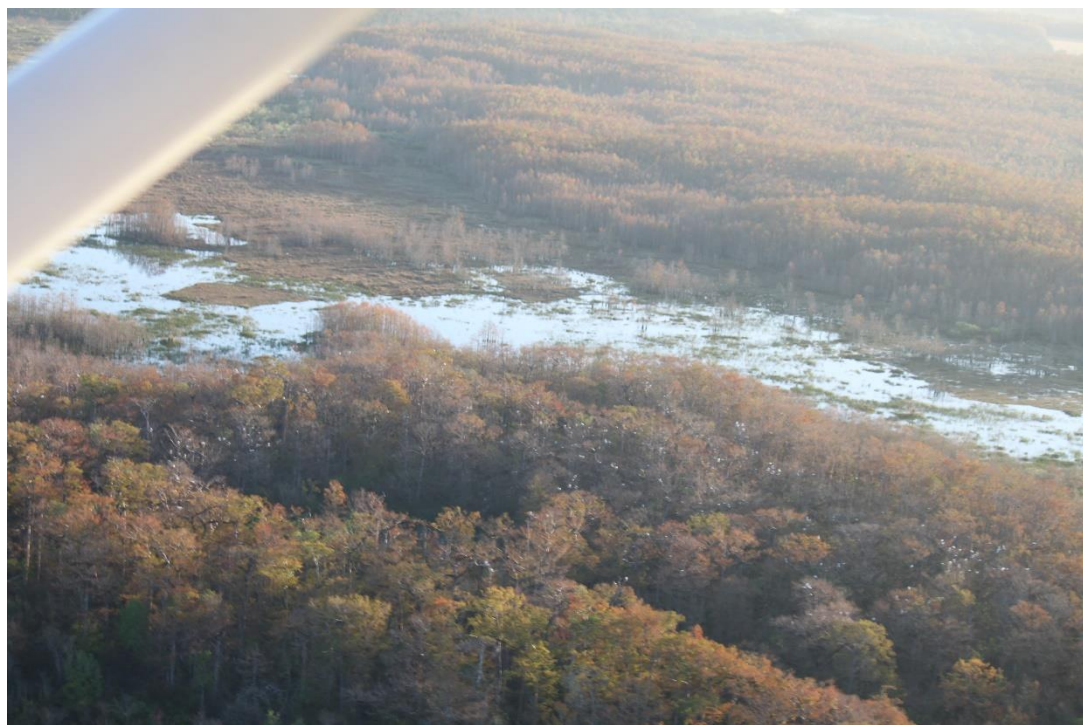


Wood Stork nests with adults and nestlings as observed at Corkscrew Swamp Sanctuary 2/1/2018.

This interim summary is intended for Corkscrew Swamp Sanctuary staff and volunteers only. Please do not share widely. Questions should be directed to Dr. Shawn Clem: sclem@audubon.org



Approximate location of the current primary Wood Stork nesting area (yellow oval) relative to Corkscrew's boardwalk (yellow lines), Fish Farm Rd (green line), and Corkscrew's boundary (white line).



*Aerial view of the primary Wood Stork sub-colony showing how dispersed Wood Storks (small white dots) are within the nesting area.
2/1/2018*

This interim summary is intended for Corkscrew Swamp Sanctuary staff and volunteers only. Please do not share widely. Questions should be directed to Dr. Shawn Clem: sclem@audubon.org